

opening reference	opening size	lintel type	lintel size
W1	1770 x 1050	CG90/100	2100
W2	1770 x 1050	CG90/100	2100
W3	1770 x 1050	CG90/100	2100
W4	685 x 2100	CH90/100	1050
W5	685 x 2100	CH90/100	1050
W6	685 x 2100	CH90/100	1050
W7	685 x 2100	CH90/100	1050
W8	685 x 2100	CH90/100	1050
W10	685 x 2100	CH90/100	1050
W11	685 x 2100	CH90/100	1050
W12	685 x 2100	CH90/100	1050
ED1	SG TBC 1010 x 2100		
ED2	1800 x 2100	CG90/100	2100
ED3	SG 1800 x 2100	CG90/100	2100
ED4	1150 x 2100	CH90/100	1500
ED5	1150 x 2100	CH90/100	1500
ED6	2700 x 2100		3100

opening reference	door size	fire door	vision panel	clear opening req.	other	lintel size
D1	1800 x 1981		✓	2x800mm	Glazed frame design TBC	2100
D2	914 x 1981			800mm		1350
D3	914 x 1981			800mm		1350
D4	914 x 1981			800mm		1350
D5	914 x 1981	✓	✓	800mm		1350
D6	1800 x 1981	✓	✓	2x825mm		2100
D7	914 x 1981	✓	✓	825mm		1350
D8	1800 x 1981	✓	✓	2x800mm		2100
D9	1800 x 1981	✓	✓	2x800mm		2100
D10	914 x 1981	✓	✓	800mm		1350
D11	914 x 1981	✓	✓	800mm		1350
Op 1	900 x 1200	✓		900mm		1200

BF Bilfold doors

opening reference	door size	fire door	vision panel	clear opening req.	other	lintel size
D1	1800 x 1981		✓	2x800mm	Glazed frame design TBC	2100
D2	914 x 1981			800mm		1350
D3	914 x 1981			800mm		1350
D4	914 x 1981			800mm		1350
D5	914 x 1981	✓	✓	800mm		1350
D6	1800 x 1981	✓	✓	2x825mm		2100
D7	914 x 1981	✓	✓	825mm		1350
D8	1800 x 1981	✓	✓	2x800mm		2100
D9	1800 x 1981	✓	✓	2x800mm		2100
D10	914 x 1981	✓	✓	800mm		1350
D11	914 x 1981	✓	✓	800mm		1350
Op 1	900 x 1200	✓		900mm		1200

BF Bilfold doors

GEN NOTES: (DOOR & WINDOWS);

All external window and door schedules are to be read in conjunction with the construction specification

For confirmation of door and window swings/handings, refer to relevant general arrangement floor plans and elevations.

The external door & window openings indicated in this schedule are structural and sufficient tolerance must be allowed for the thickness of the cavity closer and building the window within the structure or post fixing the window

Painted double glazed window units to construction specification.

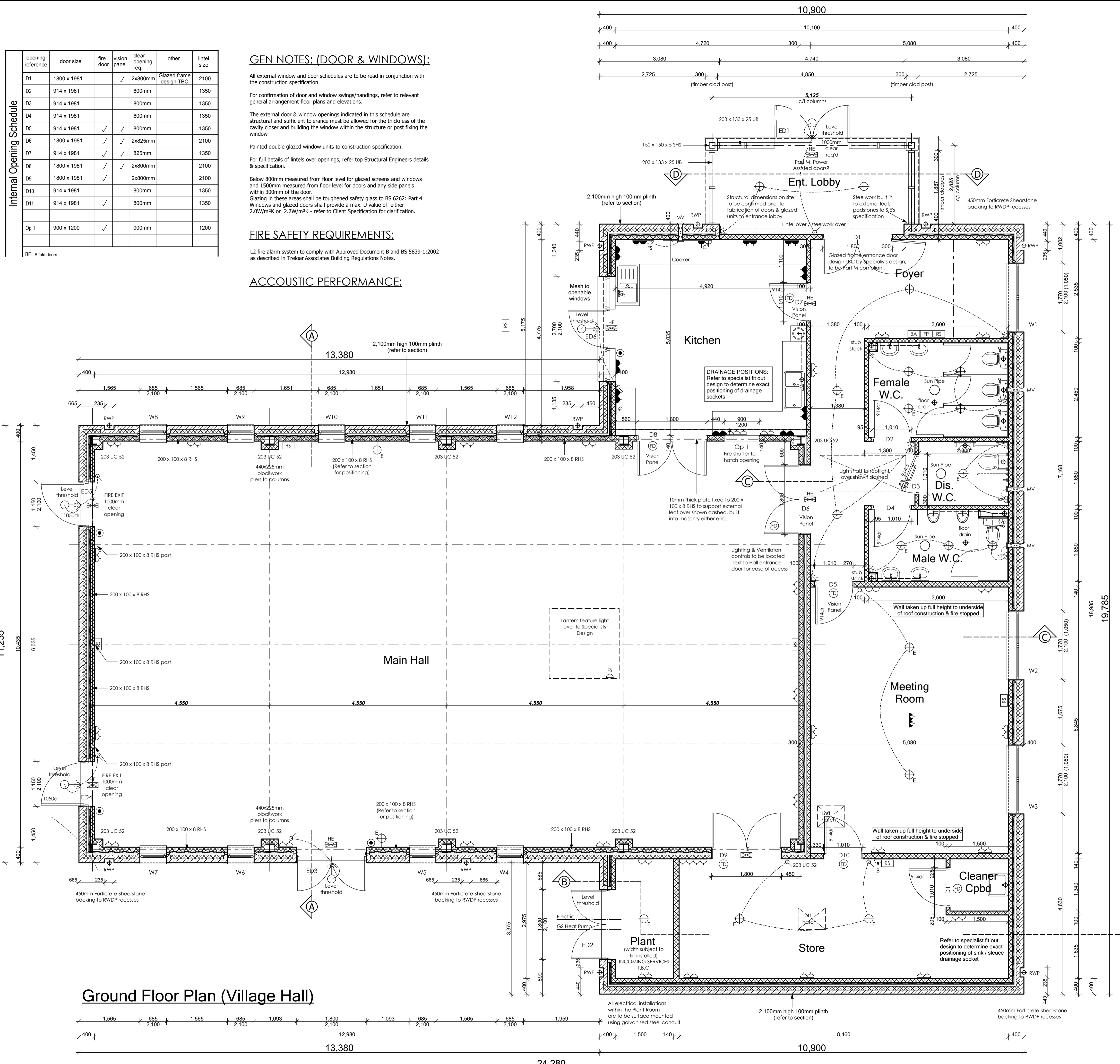
For full details of lintels over openings, refer top Structural Engineers details & specification.

Below 800mm measured from floor level for glazed screens and windows and 1500mm measured from floor level for doors and any side panels within 300mm of the door.
Glazing in these areas shall be toughened safety glass to BS 6262: Part 4
Windows and glazed doors shall provide a max. U value of either 2.0W/m²K or 2.2W/m²K - refer to Client Specification for clarification.

FIRE SAFETY REQUIREMENTS:

L2 fire alarm system to comply with Approved Document B and BS 5839-1:2002 as described in Treloar Associates Building Regulations Notes.

ACOUSTIC PERFORMANCE:



WALL KEY

WALL KEY - VILLAGE HALL	DESCRIPTION
100mm	For concrete Shearstone
100mm	Durox Supabloc 7: 7N/mm ² strength to be confirmed by Structural Engineer.
50mm	Clear cavity.
50mm	Partial cavity fill Celotex insulation.
100mm	Durox Supabloc 7: 7N/mm ² strength to be confirmed by Structural Engineer.
25mm	Plasterboard on dabs with all joints staggered, filed, taped & skimmed.
100mm	Render finish.
100mm	Hanson Evolast background blocks: 7N/mm ² strength to be confirmed by Structural Engineer.
40mm	Clear cavity.
40mm	Partial cavity fill Celotex insulation.
100mm	Durox Supabloc 7: 7N/mm ² strength to be confirmed by Structural Engineer.
25mm	Plasterboard on dabs with all joints staggered, filed, taped & skimmed.
140mm	Durox Supabloc 7: 7N/mm ² strength to be confirmed by Structural Engineer.
100mm	Durox Supabloc 7: 7N/mm ² strength to be confirmed by Structural Engineer.

- ### NOTES:
- THIS DRAWING IS TO BE READ IN CONJUNCTION WITH ALL RELEVANT DETAIL SHEETS, THE GENERAL SPECIFICATION AVAILABLE FROM CHARLES CHURCH
 - FOR FOUNDATION, BLOCKWORK STRENGTHS, STEEL BEAMS, PADSTONE AND MOVEMENT JOINTS REFER TO ENGINEERS DETAILS AND SPECIFICATIONS.
 - ALL MANUFACTURERS AND CONSTRUCTION DETAILS MUST BE APPROVED PRIOR TO WORK COMMENCING.
 - ANY LINTELS TO EXTERNAL OPENINGS TO BE INSTALLED IN ACCORDANCE WITH MANUFACTURERS INSTRUCTIONS INCLUDING CAVITY TRAYS OVER. ALL LINTELS TO BE INSULATED AS MANUFACTURERS DETAILS.
 - AT ALL ABUTMENTS THERE IS TO BE A CAVITY TRAY PREFORMED WITH WEEPHOLES.
 - LOFT HATCH TO BE INSULATED AND SEALED.
 - ENERGY EFFICIENT LIGHT FITTINGS TO BE PROVIDED IN ACCORDANCE WITH PART L 2006. DEDICATED CFL FITTINGS TO ACCEPT LIGHT FITTINGS OF GREATER THAN 40 LUMENS PER CIRCUIT WATT.
 - ALL DRAINAGE TO COMPLY WITH BUILDING REGS. PART H 2006 LAID TO REGULAR FALLS ON GRANULAR BED. DRAINS UNDER BUILDING ARE TO BE SURROUNDED IN FREE FLOWING GRANULAR MATERIAL. DRAINS PASSING THROUGH FOUNDATIONS OR WALLS, TO HAVE LINTELLED OPENING TO GIVE 50mm SPACE ALL ROUND THE PIPE. MINIMUM 100mm Ø PIPE SIZE HOWEVER INCREASED TO 150mm Ø FOR DRAINAGE SERVING 10 OF MORE UNITS. (BUILDING REGS. PART H 2006).
 - SANITARY FITTINGS TO COMPLY WITH BS5572 1978.
 - ALL FITTINGS TO HAVE DEEP SEAL TRAPS WITH WASTE SIZES; BASINS 32MM; BATH, SHOWERS, SINKS 40MM.
 - LEVEL THRESHOLDS TO ALL EXTERNAL ENTRANCE DOORS. THRESHOLDS SHOULD NOT PROJECT MORE THAN 15MM ABOVE FLOOR OR EXTERNAL GROUND LEVEL AND HAVE AN EXTERNAL DRAIN ACROSS THE WIDTH OF THE DOOR OPENING.

ELECTRICAL LEGEND

- LOW LEVEL TWIN 13AMP SWITCHED SOCKET
- ABOVE WORKTOP TWIN 13AMP SWITCHED SOCKET
- CEILING LEVEL TWIN 13AMP SWITCHED SOCKET
- FUSED SPUR
- ISOLATOR SWITCH
- FIRE ALARM PANEL
- BURGLAR ALARM
- ROOM TEMPERATURE SENDER
- UNSWITCHED SPUR
- BURGLAR ALARM
- 32A SUPPLY & COOKER CONTROL BOX
- UNSWITCHED SPUR COOKER EXTRACT & SHUTTER
- TWIN LAMP LIGHTING UNIT WITH 13A SOCKET AT HIGH LEVEL WIRED TO COMMON
- EMERGENCY LIGHTING CIRCUIT TO ENABLE REGULAR TESTING WITH TEST SWITCH IN STORE AREA.
- 3 HOUR BATTERY BACKUP TO WIRED BULKHEAD EMERGENCY LUMINAIRE C/W EURO-PICTOGRAM (RUNNING MAN) SIGNAGE & LAMP
- MANUAL CALL POINT - BREAK GLASS RELEASE TO COMPLY WITH BS5839 PART 2 WITH TEST FACILITY
- EXTERNAL WALL MOUNTED LIGHT IP65
- PASSIVE INFRA RED SENSOR

ELECTRICAL DESIGN TAKEN FROM TRELOR PROPERTY & CONSTRUCTION CONSULTANTS
DRAWING No: 11163.200 Rev A.

Ground Floor Plan (Village Hall)

ISSUED FOR TENDER

CHARLES CHURCH
Charles Church Developments Limited

THE PADDOCKS,
COX'S LANE, ENSTONE

VILLAGE HALL
GF PLAN

Date: April 2012
PAPER SIZE: A1 Scale: 1:50
Drawing No: 065 - VH - WKG_02
Rev: T3